

WELCOME TO THE ATELIER.



AKNAS is a designer, manufacturer and brand of exotic leathers
(Stingray, Crocodile, Python, Ostrich).

We are proud to introduce in this following catalogue our base jewellery collection.



Collection BASE JEWELLERY

BANGLES

Our best sale ever, a classic, always in fashion
Exist in flat version (ref. BR) and also high padding
finish (ref. BRP)

We provide both versions in many width from 10
to 60mm

Inner material is spring stainless steel that allow
you to open and close your bangle easily and with
memory

Padding shape made with sponge / foam material
Lining soft goat leather

Available with sterling silver ends
(version BR/S or BRP/S)



Reference BR.



Reference BRP.





Collection BASE JEWELLERY

FANCY VERSIONS OF BANGLES

Several ideas on how we aim customising our bangles

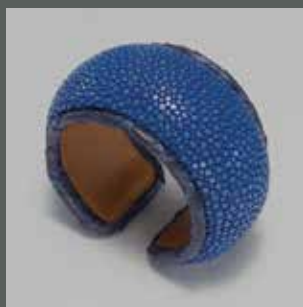
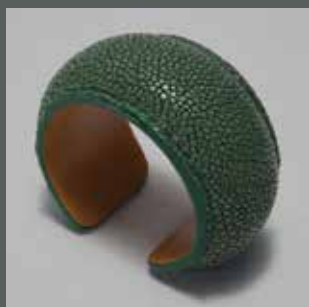
- Patchwork of different skins and colors



- Geometrical patterns and color mixed



- Side stitching



- Colors and skins mixed involving natural fur.



- Color mixed bangle (with or without sterling silver sliders)

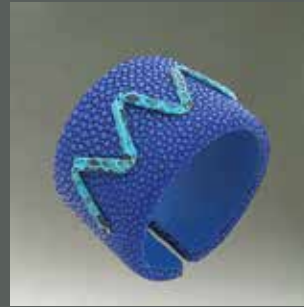
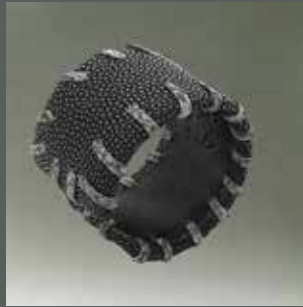




Collection BASE JEWELLERY

OTHER FANCY PATTERNS ON BANGLES

- "Like stitching" patches over the bangle



- Patterns insert inside the bangle



- Slider
over the bangle

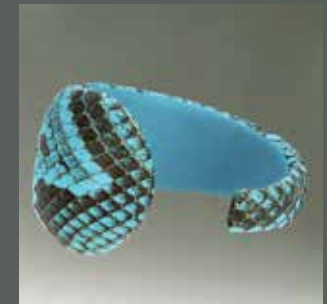


Collection BASE JEWELLERY

HIGH PADDING TAPERED BANGLE

Another style of bangle (Reference BRP3) made in the same construction as our regular padded bangle , with or without sterling silver ends

Lining soft goat leather





Collection BASE JEWELLERY

JEWELLERY BANGLES

Several jewellery design on our bangles

Lining soft goat leather





Collection BASE JEWELLERY

METAL BASE ASSEMBLED WITH OUR SKINS

- Fashion metal jewellery bases are here customised with our different skins and colors





Collection BASE JEWELLERY

STAINLESS STEEL BRACELET

Several shapes available
German stainless steel cuff
Reference BRM
Leather inserted into a groove





Collection BASE JEWELLERY

FLOWER COLLECTION

Using common cow leather bangles, we added multiple patterns of stingray flowers mounted with Swarovski crystals. Fresh combination of colors and materials

Lining soft goat leather



FROG COLLECTION

One of our best seller

- Sterling silver frogs slider made in several sizes and added on our set of bases.

Frog's eyes are set with semi precious stones. Lining soft goat leather

Necklace



BR



MBCR



BRP



Earring



Ring





Collection BASE JEWELLERY

SOFT TAPERED CUFF

Easy to add jewellery motif, with or without sterling silver ends

Exist in two width 50 & 60mm (Reference BC2SS)

Inner material is spring stainless steel wire that allow you to open and close your bangle easily and with memory

Lining soft goat leather

- Moko moko pattern
(geometric inner pattern)



- 3 layers version , you can mix our skins and colors

- Some examples of jewelry added on our bangles





Collection BASE JEWELLERY

ROMAN CUFF

Large and soft cuff. Reference BS.

Easy to add jewellery motif, without sterling silver ends. Exist in three length 80, 100 & 120mm

Inner material is spring stainless steel wire that allow you to open and close your bangle easily and with memory

Lining soft goat leather



SQUARE SHAPE BANGLE

Width 30mm. Inner material is spring stainless steel that allow you to open and close your bangle easily and with memory. Reference BRQ30.

Padding shape made with song / foam material. Lining soft goat leather





Collection BASE JEWELLERY

WRISTBAND

- Magnet wristband,width varie from 10 to 50mm

Strong round magnet.

Reference BCA

Lining soft goat leather



- Spring cut bracelet

Width 25mm,steel blade that close automatically when bended.Reference BCSP25

Lining soft goat leather



- Hand bag clasp wristband,width varie from 10 to 50mm

Reference BC25-2LS

Lining soft goat leather



- Bracelet de force

Wide soft band (40 & 50mm) with a wristband and buckle (12 & 15mm)Reference BSB

Lining soft goat leather





Collection BASE JEWELLERY

WRISTBAND WITH BUCKLE OR CLASP

- Wristband with buckle / ball clasp
- Width varie from 10, 12, 15 & 20mm
- Length can vary from a single, double or triple wrap wristband
- Usually with 3-5 holes
- Lining soft goat leather



Reference BCB



Reference BCBB5





Collection BASE JEWELLERY

WRISTBAND WITH BUCKLE OR CLASP

- Wristband with clasp

Width exist in 12, 15 & 20mm

Length can vary from a single, double or triple wrap wristband

No holes

Lining soft goat leather



Reference BCB1



Reference BC2B





Collection BASE JEWELLERY

WATCHBAND AND IWATCHBAND

- For lady

Length is 105/65mm (long / short part)

Width can be chosen from 12/10, 14/12, 16/14, 18/16, 20/16, 20/18mm (watch side / buckle side)

Lining cow full grain, usually in cream color

Skin name and size printed on lining

Stitching can be added

Usually 6 holes on long part

Buckle can be include Lining soft goat leather

- For man

Length is 115/75, 120/75 or 120/80 mm (long / short part)

Width can be chosen from 16/14, 18/16, 20/16, 20/18, 22/20, 24/20, 24/22mm (watch side / buckle side)

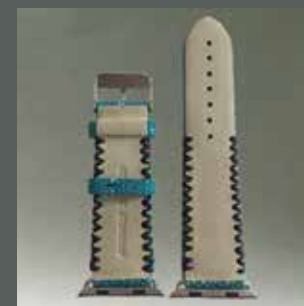
Lining cow full grain, usually in cream color

Skin name and size printed on lining

Stitching can be added

Usually 6 holes on long part

Buckle can be include Lining soft goat leather





Collection BASE JEWELLERY

ROUND RIGID BRACELET

Leather wrapped on stainless steel wire
Diameter can vary from 6, 8, 10mm
Reference (MBCR)
Easy to open and close

Those are multiple examples of designs made
with this kind of base
- with sterling silver designed ends





Collection BASE JEWELLERY

ROUND RIGID BRACELET JEWELLERY

Leather wrapped on stainless steel wire

Diameter can vary from 6, 8, 10mm

Reference (MBCR)

Easy to open and close

Those are multiple examples of designs made with this kind of base

- with sterling silver ends
- with sterling silver design including semi-precious stones





Collection BASE JEWELLERY

SINGLE OR MULTIPLE LEATHER CORD

Diameter exist in 3, 4, 5, 6, 8, 10mm

Length can vary from a single, double or triple wrap

Reference BCR

Clasp are provided in several designs for a single or multiple cords assembled together

Clasp exist in stainless steel or sterling silver





Collection BASE JEWELLERY

NECKLACE

Diameter exist in 3, 4, 5, 6, 8, 10mm

Length can vary from a single, double or triple wrap. Reference NCR

Clasp are provided in several designs for a single or multiple cords assembled together

Clasp exist in stainless steel or sterling silver

Available with or without chain

Leather wrapped on stainless steel wire

Diameter can vary from 6, 8, 10mm

Easy to open and close

Reference MNCR

- Magnet chocker band

Width varie from 10 to 30mm

Strong round magnet

Reference NCA

Lining soft goat leather





Collection BASE JEWELLERY

RIGID CHOKER

We provide few versions in several width from 20 to 60mm

Inner material is spring stainless steel that allow you to open and close your choker easily and with memory

Padding shape made with sponge / foam material

Reference MNPT-MNFT

Lining soft goat leather

Available with sterling silver ends





Collection BASE JEWELLERY

EARRING

We provide several designs with or without sterling silver frame, ends
Leather will be glued around a rigid or soft base
Any shape could be applied





Collection BASE JEWELLERY

RING

We provide several designs with or without sterling silver frame, ends

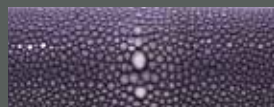
Leather will be glued around a rigid or soft base

Any shape could be applied

Lining soft goat leather



STINGRAY



VIOLET



LAVENDER



LAPIS



NAVY



SAPPHIRE



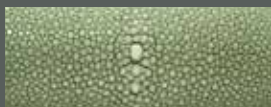
TURQUOISE



SAPIN



MINT



CELADON



NATURAL



MUSTARD



CARAMEL



CHOCOLATE



SAFRAN



SABLE



CITRON



SUN



CANARIES



TANGERINE



CORAL



MALDIVES



ROSSO



SNOW



FUCHSIA



ROSE PINK



SENSUAL PINK



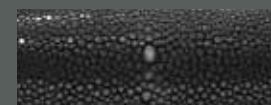
VIEUX ROSE



BORDEAUX



STEEL



NOIR

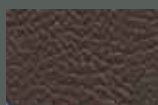
GOAT



BLACK



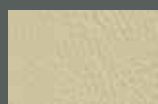
TAN



CARAMEL



BROWN



CREAM



YELLOW



PINK



VIOLET



ORANGE



CORAL



RED



KAKI



TURQUOISE



BLUE



NAVY



GREY



CROCODILE



CANARIES



MALDIVES



CARBON



OAK



WINE



VIOLA



COBALT



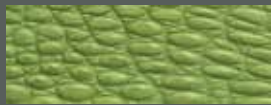
GOLD



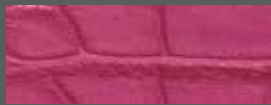
ROSE



LAVENDER



LIME



FUSHIA



TURQUOISE



STONE

PYTHON



NATURAL



STEEL



TURQUOISE



VIOLA



MALDIVES



FUSHIA



CARAMEL



SAFFRAN



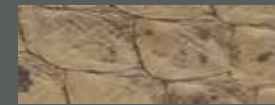
LIME



CANARIES



SAPHIR



PEPPER



SNOW



BLACK

OSTRICH LEG



ONYX



MAROON



CHROME



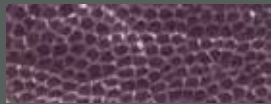
COPPER



PEPPER



RUGGED



LAVENDER



FUSHIA



RUBY



TANGERINE



SAPHIR



LIME



BRONZE



FOREST



TURQUOISE



CITRON



WHITE



WHO ARE WE?

AKNAS is a designer, manufacturer and retailer of high-end exotic leathers accessories. Founded in June 2001, AKNAS has always been a holistic manufacturer.

Our master-craftsmen are trained in-house in the art of using our very unique variety of leathers, so AKNAS has been able to offer a very stable quality output, year after year.

Since its inception, AKNAS has designed, co-designed and produced items for some of the best leather goods accessories and product design companies in the world and earned a reputation for manufacture excellence.

We are known to always seek and develop partnerships based on one simple idea: Quality.

TRADE & SERVICES

OEM-Developing original finished or semi-finished products and make them available to designers, retailers and brands to be personalized and branded.

ODM-Co-developing products together with designers and manufacturing the resulting creations for them.

"Atelier AKNAS" brand

- offering franchises to sell and distribute "Atelier AKNAS" finished original product.
- distributing the "Atelier AKNAS" branded lines of products through our stores.



WHO ARE WE?

The Atelier ("highly specialized workshop" in French) and the office form a tight team. Situated across from one another in the yard they share with the company's founders house, their physical proximity is crucial to the quality of our production, from the first draft to the finished product.

Stock



Cords, straps & wearables



Small medium leather goods



Silversmithing



Home decoration



Quality Control





BEING A RESPONSIBLE MANUFACTURER

STINGRAY

Stingray leather, also called shagreen or galuchat, is a material half way between the animal and the mineral and which comes from various families of stingrays.

Stingray hides are collected throughout south-east Asia, but they essentially come from Indonesia.

They are the production of a long established, non-industrial, food fishing tradition. What all our hides share is their suppleness, the richness of their color and the finished quality of their beads. These three attributes have allowed us to distinguish ourselves and earned us the honor of working with great leather goods companies and luxury brands.

Our hides come from traceable, responsible sources.



CITES (the Convention on International Trade in Endangered Species of Wild Fauna and Flora, a.k.a. Washington Convention) is a multilateral treaty designed to protect endangered plants & animals and entered into force on July 1, 1975. Its aim is to ensure that international trade in specimens of wild animals and plants does not threaten the survival of the species in the wild, and it accords varying degrees of protection to more than 35,000 species of animals and plants.

CROCODILE PYTHON

Because it is a moral imperative, a sound sustainable approach to business and the law, AKNAS scrupulously abides by the convention and provides certificates for the two types of skins requiring them: python and crocodile.